

IEC Appliance Inlet C8, insert Mounting, Solder, PCB or Quick-connect Terminal



C8  
  
 70° C



### Description

Drop-in type Appliance Inlet,  
 - Pin temperature 70 °C, Protection class II  
 - Solder, Quick Connect or PCB Terminal

### Approvals

- VDE Certificate Number: 40002274  
 - UL File Number: E96454  
 - CSA File Number: 27324

### References

We recommend for new applications the type [0720-FP](#)

### Weblinks

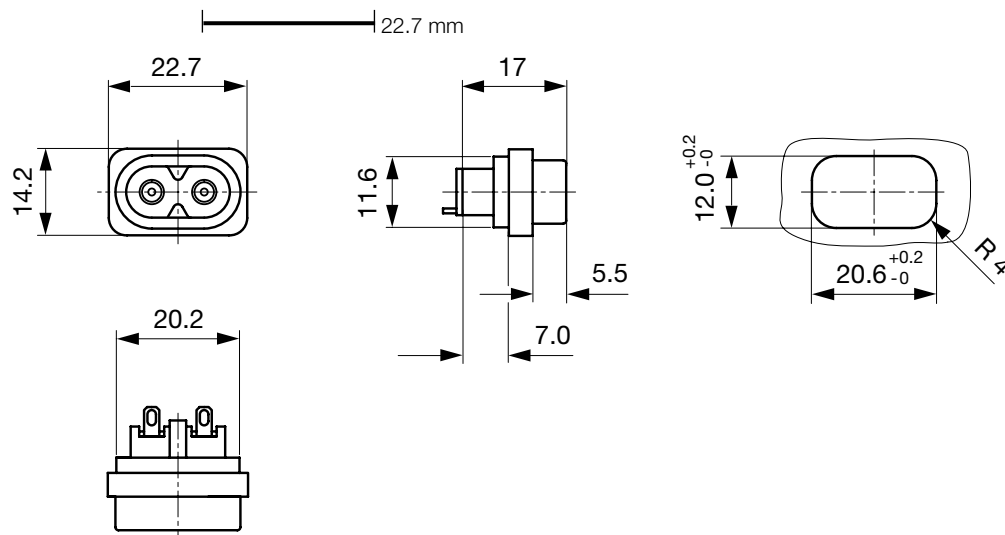
[pdf](#), [html](#), [General Product Information](#), [Approvals](#), [RoHS](#), [CHINA-RoHS](#), [Mating Connectors](#), [e-Store](#), [SCHURTER-Stock-Check](#), [Distributor-Stock-Check](#), [Accessories](#), [Wire Harness](#)

### Technical Data

Ratings IEC	2.5 A / 250 VAC; 50 Hz
Ratings UL/CSA	2.5 A / 250 VAC; 60 Hz
Dielectric Strength	> 4 kVAC between L-N > 2 kVAC between L/N-PE (1 min/50 Hz)
Allowable Operation Temp.	-25 °C to 70 °C
Degree of Protection	from front side IP 20 acc. to IEC 60529
Protection Class	Suitable for appliances with protection class 2 acc. to IEC 61140
Terminal	Solder, Quick Connect or PCB Terminal straight
Material: Housing	PA6, black / grey / white, UL 94V-0

Appliance Inlet	C8 acc. to IEC/EN 60320-1 UL 498, CSA C22.2 no. 42 (for cold conditions) pin-temperature 70 °C, 2.5 A, Protection Class 2
-----------------	--

### Dimensions



Length of the terminal please find at the order code configuration table

### Config. Code

#### 2572 - H - A B C 0- D - E G F

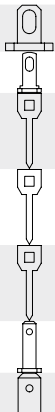
The characters are placeholders for the correspondingly keys of selections from the key tables.

#### 2572 - H - A B C 0- D - E G F = Type

Type	Configuration key
protection class 2	B

#### 2572 - H - A B C 0- D - E G F = Terminals

Terminal L	Configuration key
short solder terminal (L = 4.8 mm)	2
long solder terminal (L = 8.5 mm)	3
PCB-terminal (standard)	4
PCB-terminal (short)	5
PCB-terminal (long)	6
Blade terminal (2.8 x 0.8 mm)	7
Blade terminal (4.8 x 0.8 mm)	8



#### 2572 - H - A B C 0- D - E G F = Terminals

Terminal N	Configuration key
short solder terminal (L = 4.8 mm)	2
long solder terminal (L = 8.5 mm)	3
PCB-terminal (standard)	4
PCB-terminal (short)	5
PCB-terminal (long)	6
Blade terminal (2.8 x 0.8 mm)	7
Blade terminal (4.8 x 0.8 mm)	8

Symbols similar as in table A

#### 2572 - H - A B C 0- D - E G F = Terminals

Terminal Ground	Configuration key
without terminal	0

Symbols similar as in table A

#### 2572 - H - A B C 0- D - E G F = Color

Color	Configuration key
jet black; RAL9005	A
silver grey; RAL7001	B
pure white; RAL9010	D

#### 2572 - H - A B C 0- D - E G F = Style

Style	Configuration key
insert type	5

#### 2572 - H - A B C 0- D - E G F = Dimension X

Dimension "X"	Configuration key
00	

The dimension "X" is displayed in ( $\frac{1}{10}$  mm). This information is also valid for the order code

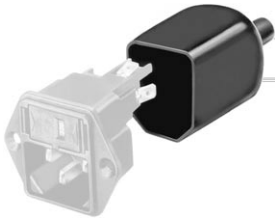
#### 2572 - H - A B C 0- D - E G F = Orientation of Terminals

Orientation of Terminals	Configuration key
horizontal	A
vertical	B

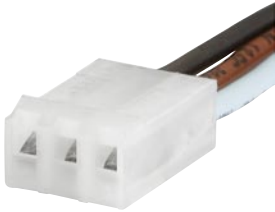
**Packaging unit** 100 Pcs

## Accessories

### Description



Assorted Covers  
Rear Cover



Wire Harness  
Wire harness for SCHURTER products

## Mating Outlets/Connectors

### Category / Description

#### Power Cord [Overview complete](#)



Power Cord with IEC Connector C7, Straight 70°C	2510
Power Cord with IEC Connector C7, Angled	2511
Power Cord with IEC Plug C7, Angled	2514
Power Cord with IEC Connector C7, Straight 70°C	4810

[Power Cord](#) further types to 2572